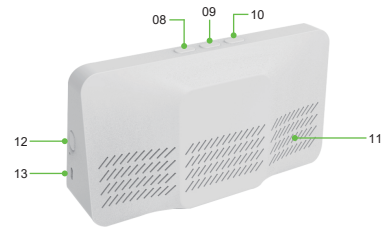
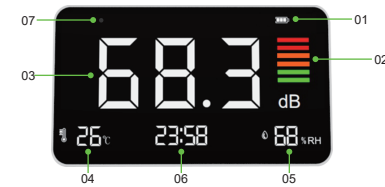




Wall Mounted Sound Level Meter

Sound Level Decibel Noise Meter



| | | | |
|----|------------------------------|----|------------------------------|
| 01 | Battery | 02 | Bars symbols (noise level) |
| 03 | Noise reading | 04 | Temperature |
| 05 | Humidity | 06 | Time |
| 07 | Probes (Microphone sensor) | 08 | Right Button |
| 09 | M button (setup button) | 10 | Left button |
| 11 | Air Inlet | 12 | Power Button |
| 13 | Type-C Port | | |

GET STARTED - HOW TO USE



- Step 1:** Short press the power button to turn it on.
- Note :** If the device does not power on right away, then please charge it first. Plug in the decibel meter using a standard cell phone adapter plug.
- Step 2:** Quickly press the M button twice to enter the Hour time setting, use the left/right buttons to adjust to the desired value, then press the M button to enter the Minute setting, use the left/right buttons to adjust to the desired value, and finally press M button to confirm. The time setting is complete.
- Step 3:** Adjust the screen brightness to your desired setting by pressing the Left Button and Right Button.
- Note :** Short press Left button to decrease brightness, press Right button to increase brightness.
- Step 4:** Quickly press right button twice to switch the temperature unit from Celsius to Fahrenheit. Quickly press Left button twice to switch the temperature unit from Fahrenheit to Celsius.
- Step 5:** In the power on state, press and hold the power button for 2 seconds to turn it off.
- Step 6:** Charge it using the coming Type-C cabel. The battery level indicator displays red when charging, and green when fully charged.

How to Interpret Readings



| | | | | | | |
|-----------------|------------|--------------|--------------|--------------|--------------|---------------|
| | | | | | | |
| Decibel Reading | 30-55 (dB) | 55.1-65 (dB) | 65.1-75 (dB) | 75.1-85 (dB) | 85.1-95 (dB) | 95.1-130 (dB) |

| | Comfortable | Uncomfortable |
|-------------|----------------------------|----------------------------------|
| Temperature | 15°C - 26°C 65°F - 79°F | <26°C or >15°C <79°F or >65°F |
| Humidity | 30 - 60% | <30% or >60% |

Considerations & Precautions



- DO NOT** touch or poke the Microphone Sensor! It is NOT a reset button. Doing so will damage the product and invalidate the warranty.
- DO NOT** use chemicals or solvents to clean the product as residual fumes will skew air quality readings.
- DO NOT** put water or other liquids on or near the product to avoid electrical damage.
- DO NOT** allow unauthorized modification or repair of this product.
- DO NOT** take apart or disassemble this monitor. Doing so may damage the product and will invalidate the warranty.
- This decibel meter is meant to be used indoors and kept dry at all times. It is strongly recommended to store in a cool, dry place.



PRODUCT SPECIFICATIONS

| | |
|----------------------------|-----------------------------|
| Display Method | LED Screen |
| Atmospheric Pressure | 12.5 PSI - 15.4 PSI |
| Sampling Time | 1.5 Seconds |
| Temperature Range | -10°C - 60°C (14°F-140°F) |
| Storage Temperature | -10°C - 60°C (14°F-140°F) |
| Relative Humidity | 20% - 85% |
| Humidity Range | 20% - 85% |
| Charging | 1A/2A 5V |
| Battery | 2000 mAh Lithium Ion |
| Product Weight | 208g (7.34 oz) |
| Product Size | 6.3 x 3.5 x 1.96 Inches |
| Concentration Unit Decibel | dBA |
| Measuring Range | 30 - 130 dB |
| Accuracy | ±1.5 dB |
| Frequency Range | 50Hz - 8.5kHz |
| Frequency Weighting | A |
| Resolution | <99.9dB 0.1 dB ; >100dB 1dB |