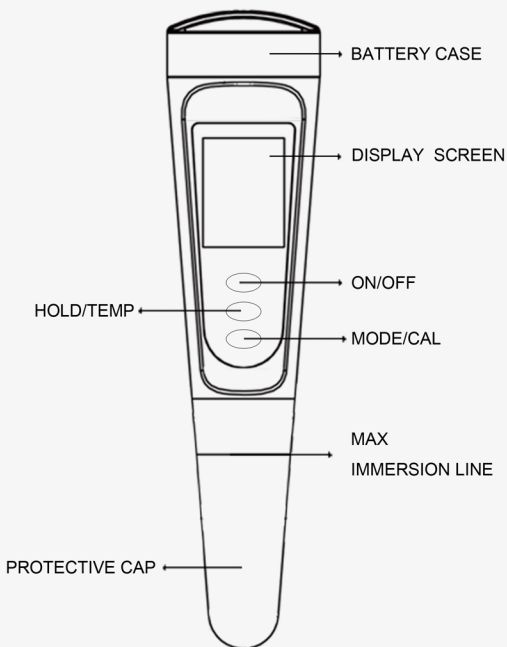
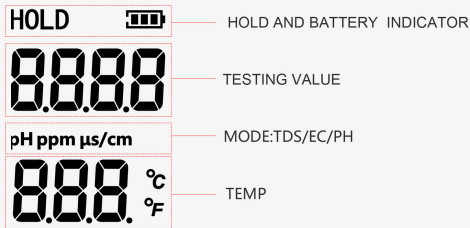


TDS/EC/PH/SALT/TEMP WATER QUALITY METER

sisco



SCREEN DISPLAY



ON/OFF power button

HOLD TEMP hold button and temperature shift button

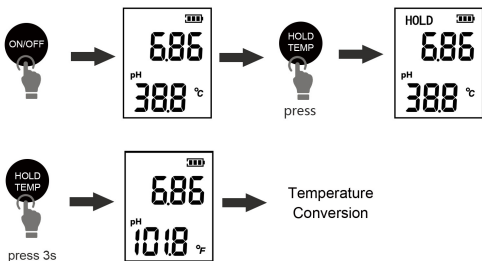
MODE CAL calibration shift button and mode button

USING STEPS

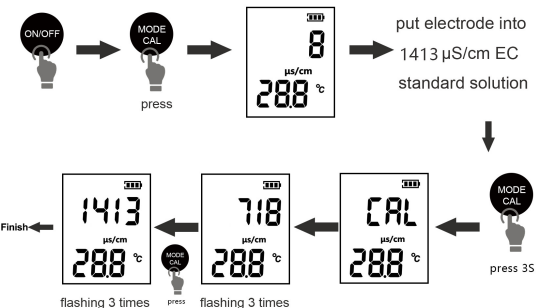
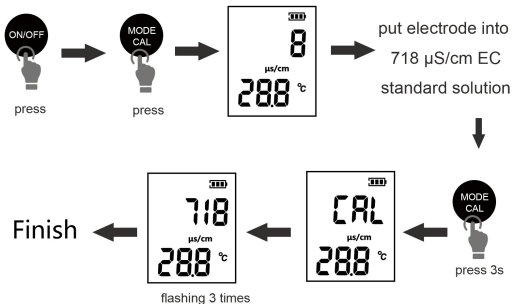
1. Remove the protective cap;
2. Turn the meter on by pressing the "ON/OFF" key;
3. Immerse the meter electrode in the test solution (immersion depth can not be over the immersion line);
4. Stir gently and wait until the reading stabilized.;
5. if you need test temp, please long press "HOLD/TEMP" button to get temp reading;
6. After finished, clean the electrode with distilled water, turn the meter off by pressing the "ON/OFF" key;
7. Replace the protective cap after use.

OPERATION

HOLD/TEMP.SHIFT



TDS/EC CALIBRATION



PH CALIBRATION

4.00



put electrode into
4.00 ph standard
solution



Finish



flashing 3 times

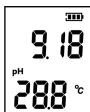


press 3s

9.18



put electrode into
9.18 ph standard
solution



Finish



flashing 3 times



press 3s

6.86



put electrode into
6.86 ph standard
solution



Finish



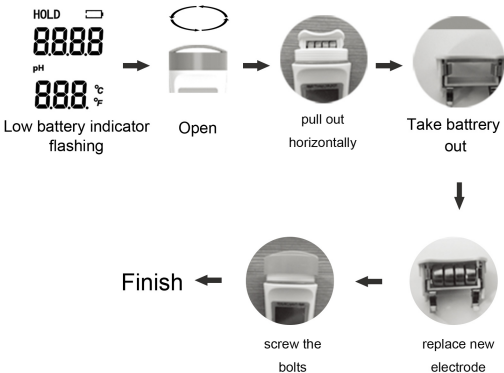
flashing 3 times



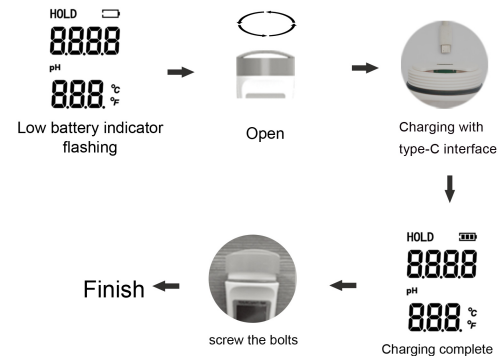
press 3s

LOW BATTERY

Parameters:MF-M41



Parameters:MF-M41C



Battery parameters: 3.7V/400mAh

Recommended value: 5V/1A

When the display value is fuzzy or unshown, The battery should be replaced promptly or charge it in time.
Pay attention to the polarity of battery.

PACKING LIST

- 1.TDS/EC/PH/TEMP meter
- 2.PH buffer powders
- 3.English manual

ATTENTION

Before use, the probe should be soaked in water for two minutes, activate the probe before use or calibration

- 1.Recalibration is required in the following conditions:
 - Lengthy periods of inactivity - Very frequently use
 - The testing accuracy requirement is very high.
 - The "cal"(calibration) button was pushed and electrode exposed to air for extended period of time.
- 2.If you calibrated the meter in the air or in wrong calibration solution,there will flash"ERR"on the screen.
- 3.When the tester is on, the value is jumping in the air, which is a normal phenomenon.
- 4.The product is modular design, if the probe is damaged, you can buy the probe for replacement
- 5.Please recalibrate the device after replacing probe
- 6.Always replace protective cap after using digital meter to keep electrode from drying out due to prolonged exposure to air, which leads to slow or unstable readings.
- 7.If electrode has been dried out , immerse it into distilled water for a few hours.
- 8.People should press the HOLD and MODE Buttons for 3 seconds at the same time to reset it,when the date is abnormal.

WARRANTY

- 1.The instrument is warranted to the purchaser for a year from the date of purchase if during these periods,repair or replacement of the instrument is required,Please return the instrument to either your dealer or our office.the repair will be effected free of charge(Damage is not due to negligence or erroneous operation by the user)
- 2.Please provide purchase invoice or proof before returning your instrument back.